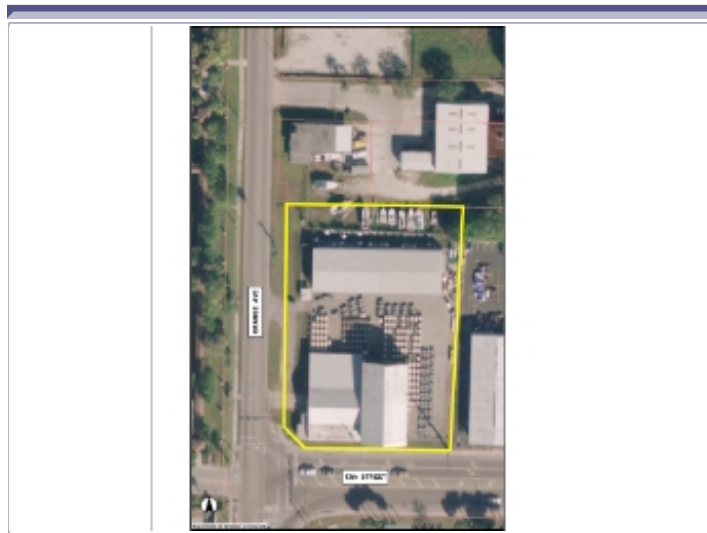


# 18,966 SF Bldgs with Paved Storage Yard

Jeff Button · (941) 313-1193 · jeff@sarasotawarehouses.com

Richardson Kleiber Walter Kleiber Ptr.



## 1208 N Orange Ave Sarasota, FL

<b>County:</b>	Sarasota
<b>Suite/Floor:</b>	1
<b>Space Type:</b>	Industrial Warehouse
<b>Lease Type:</b>	Modified Net
<b>Date Available:</b>	Immediate
<b>Space Available:</b>	18,966 SF
<b>Rental Rate:</b>	\$4.11/SF/Year
<b>Building Size:</b>	18,966 SF
<b>Year Built:</b>	1951
<b>Status:</b>	Available
<b>LoopNet ID:</b>	15082956

<http://listing.loopnet.com/15082956>

### Space Description

#### Property Description

18,966 SF Total Building Area includes 4,302 SF Office and Enclosed Warehouse Area with several Covered Storage Buildings totaling 14,664 SF. FACILITY HAS 3 PHASE POWER. THE ENTIRE SITE INCLUDES PERIMETER FENCING WITH NEARLY THE ENTIRE 1.3 ACRE SITE PAVED FOR OUTDOOR STORAGE.

#### Location Description

Located at the northeast corner of Orange Ave & 12th Street, just north of Downtown Sarasota. Excellent location in an industrial/commercial oriented area providing excellent access to Downtown Sarasota, US 301, Fruitville Rd & I-75.

#### Zoning Description

ILW - Industrial Light Warehousing - City of Sarasota



- LARGE FENCED, PAVED STORAGE YARD
- CORNER LOCATION

- 3 PHASE POWER
- ILW ZONING

Created: 4/10/2007

LoopNet, Inc. © Copyright 1995 - 2007

This information comes from users and sources believed to be reliable, but is not guaranteed.