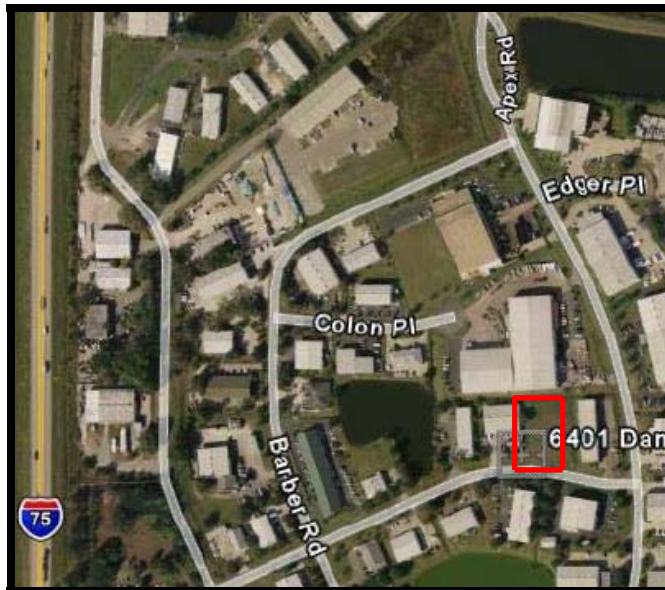


RICHARDSON KLEIBER WALTER

KLEIBER PARTNERSHIP

Real Estate Broker & Consultants

6401 Danner Rd. Sarasota, FL 34240 Eastern Industrial Park



- ◆ Vacant Land - 27,516 SF /.63 Acres
- ◆ Deed Restricted Industrial Park
- ◆ Central Utilities lines existing
- ◆ Zoned PID

FOR SALE
\$350,000

Bill Kleiber Jeff Button
941-378-2328 or cell 313-1193
www.SarasotaWarehouses.com
Jeff@SarasotaWarehouses.com

*This information is not warranted or guaranteed by Richardson Kleiber Walter and is subject to change without notice.
Cooperating Broker compensation is 2.5% first year of lease term only or 1.5% of the sale price at closing.*